

The hemolytic power of beef serum that is kept in the ice box (3° C.) remains unchanged for 48 hours, then begins to deteriorate. It is thought that the marked difference between the hemolytic power of serum from animals of different ages may be an example of other changes accompanying old age, and further tests are being planned to bring these to light, and thus, perhaps elucidate the cause of senility.

This is a preliminary communication.

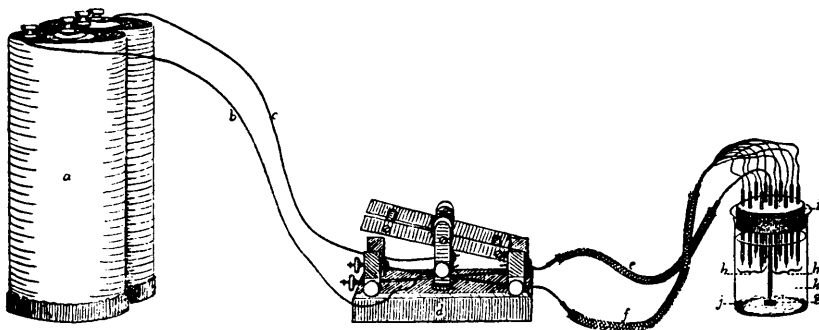
3602

A Simple Arrangement for Platinizing Electrodes.*

WILLIAM C. AUSTIN.

From the Department of Physiological Chemistry, Loyola University School of Medicine.

The accompanying figure shows a simple arrangement for the electrolytic deposition of platinum upon electrodes for hydrogen ion work.



A battery of two dry cells, *a*, is connected in series to a commutator, *d*, by wires, *b*, and *c*. The commutator is connected to a single central anode, *g*, by wire *e*, and to the cathodes, *h*, by branching of the cable wire, *f*. The electrodes, *g*, and *h*, are loosely held in position by insertion through the holes of the flat cork, *i*, which is supported in the 100 cc. beaker, *j*, in such a way that the metal of the electrodes is immersed in the platinic chloride solution, *k*. The electrode, *g*, consists of a platinum foil connected to a short piece of

* Demonstrated at the Federation of American Societies of Experimental Biology, Rochester, N. Y., April 15, 1927.

platinum wire, which is in turn sealed into the 5 mm. glass tube. A single wire electrode would probably serve just as well here. The electrodes, *h*, were made by sealing 18 or 20 gauge platinum wire into pieces of 4 mm. Mett's tubing. The cable wire, *f*, is a piece of 16 strand electric wire such as is used in flexible extension cords. The core has been bared and the individual strands distributed as shown.

The arrangement has several distinct advantages.

1. Many electrodes may be prepared simultaneously at a great saving of time.

2. After plating is concluded the cork with electrodes may be transferred to a 100 cc. beaker filled with distilled water.

3. A reserve stock of electrodes is always available. The electrodes thus prepared keep for several months in distilled water.

4. The apparatus is in stable equilibrium.

In removing the prepared electrodes care must be exercised to draw them downward and out in such a way as to avoid scraping the plated surfaces. The holes in the cork should not grip the electrodes too tightly. Wetting will aid in removing them and inserting them into the rubber stoppers of the Clark vessel.

In all other respects the directions for preparation of the electrodes do not differ from those of the accepted treatises.

From theoretical considerations one would expect that the electrodes nearer the central anode would receive heavier deposits of platinum. In order to avoid this as much as possible, the anode is lowered to the bottom of the solution. In actual practice we have not encountered any difficulties due to inequalities of deposits of platinum.